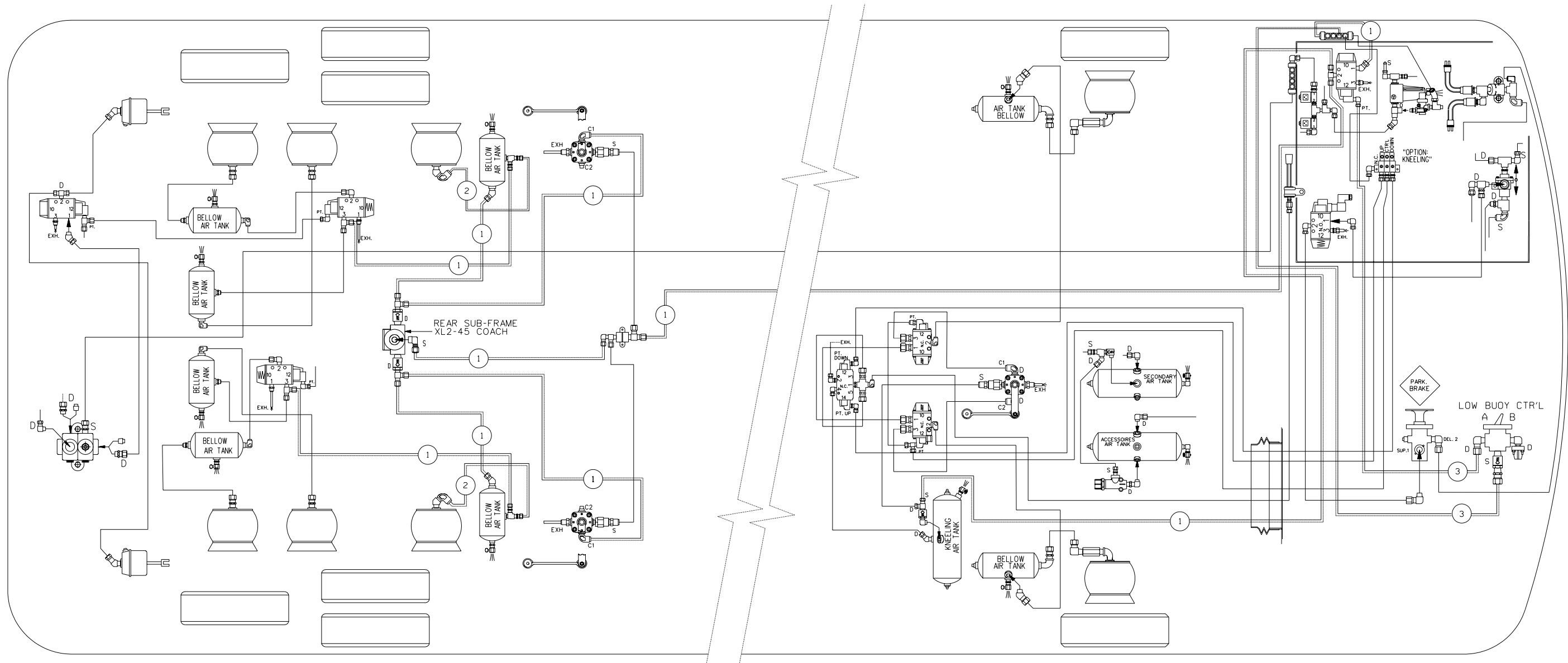


D140300 P.1 REV.C
XL2-45 COACH, ENGINE 2002 WITH
INDEPENDENT FRONT SUSPENSION (I.F.S.)

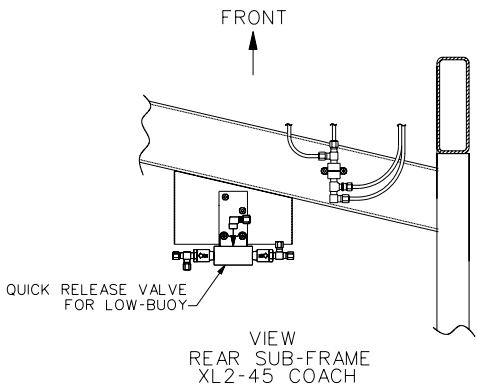


NOTE:

CONTROL VALVE OPT. "LOW-BUOY" , "A" OR "B" SETTING:

POSITION "A": VALVE IS OPEN,
AIR FLOW BETWEEN SUPPLY (S) AND
DELIVERY (D) , LOW-BUOY IS NOT IN FUNCTION.

POSITION "B": VALVE CLOSED,
AIR DOESN'T FLOW BETWEEN SUPPLY (S) AND
DELIVERY (D) , LOW-BUOY IS IN FUNCTION.



TUBE COLOR CODING	
ACTIVE COLOR	CIRCUIT
→ → → RED	SECONDARY
→ → → GREEN	PRIMARY & SUPPLY
→ → → YELLOW	PARKING BRAKE
→ → → BLUE	SUSPENSION
→ → → BLACK	ACCESSORIES

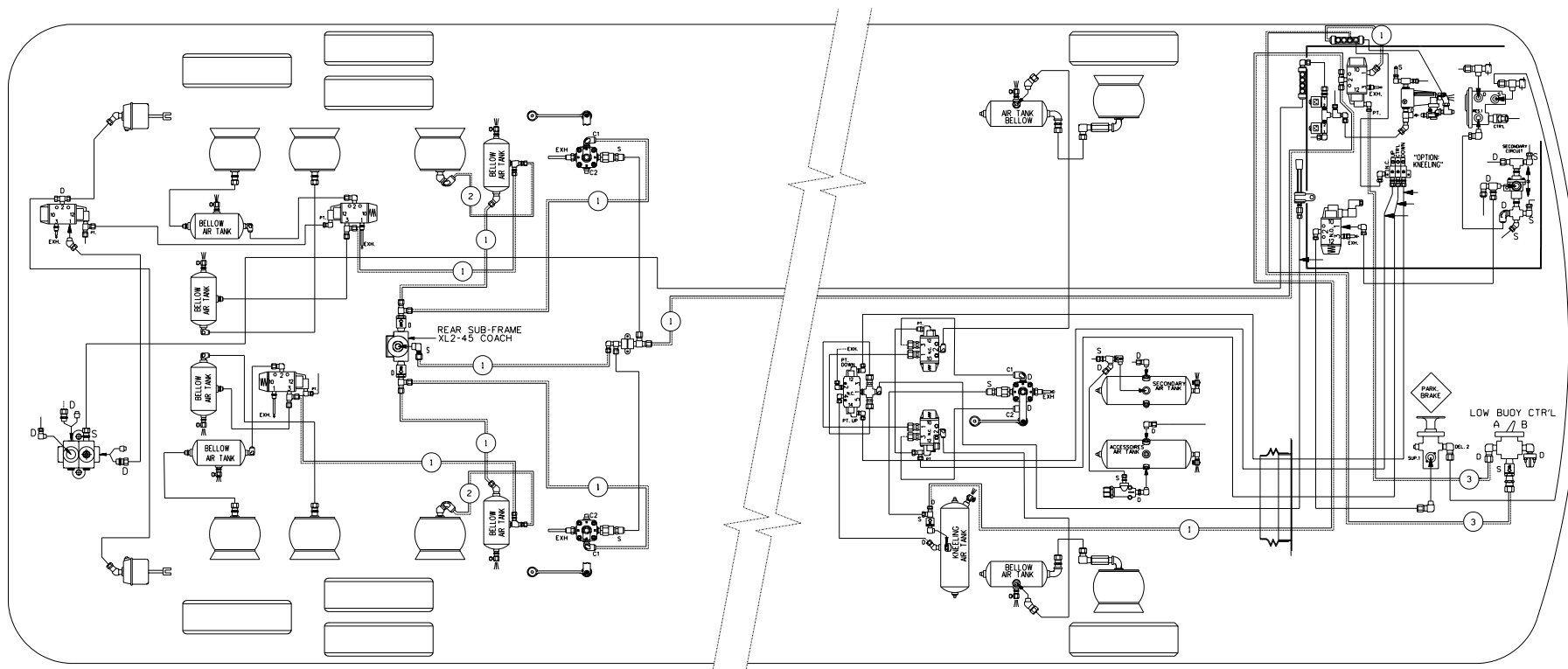
BALLOON	PIPE
#1	3/8" O.D. BLUE
#2	3/4" O.D. BLACK
#3	1/4" O.D. BLACK
=====	STD PIPING
=====	OPTIONAL PIPING

XL2-45 COACH,
ENGINE 2002
WITH I.F.S.

WITH OPTION FRONT KNEELING
& REAR LOW-BUOY COMBINATION

D1 40300 P2 REV.B

DATE : 2004/02

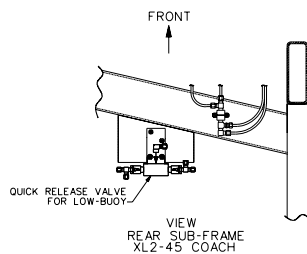


NOTE:

CONTROL VALVE OPT. "LOW-BUOY" , "A" OR "B" SETTING:

POSITION "A": VALVE IS OPEN,
AIR FLOW BETWEEN SUPPLY (S) AND
DELIVERY (D) , LOW-BUOY IS NOT IN FUNCTION.

POSITION "B": VALVE CLOSED,
AIR DOESN'T FLOW BETWEEN SUPPLY (S) AND
DELIVERY (D) , LOW-BUOY IS IN FUNCTION.



TUBE COLOR CODING	
ACTIVE	COLOR
→ →	RED
→ →	GREEN
→ →	YELLOW
→ →	BLUE
→ →	BLACK
	SECONDARY
	PRIMARY & SUPPLY
	PARKING BRAKE
	SUSPENSION
	ACCESSORIES

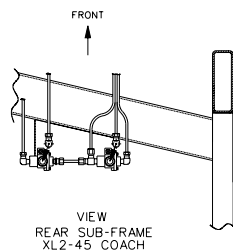
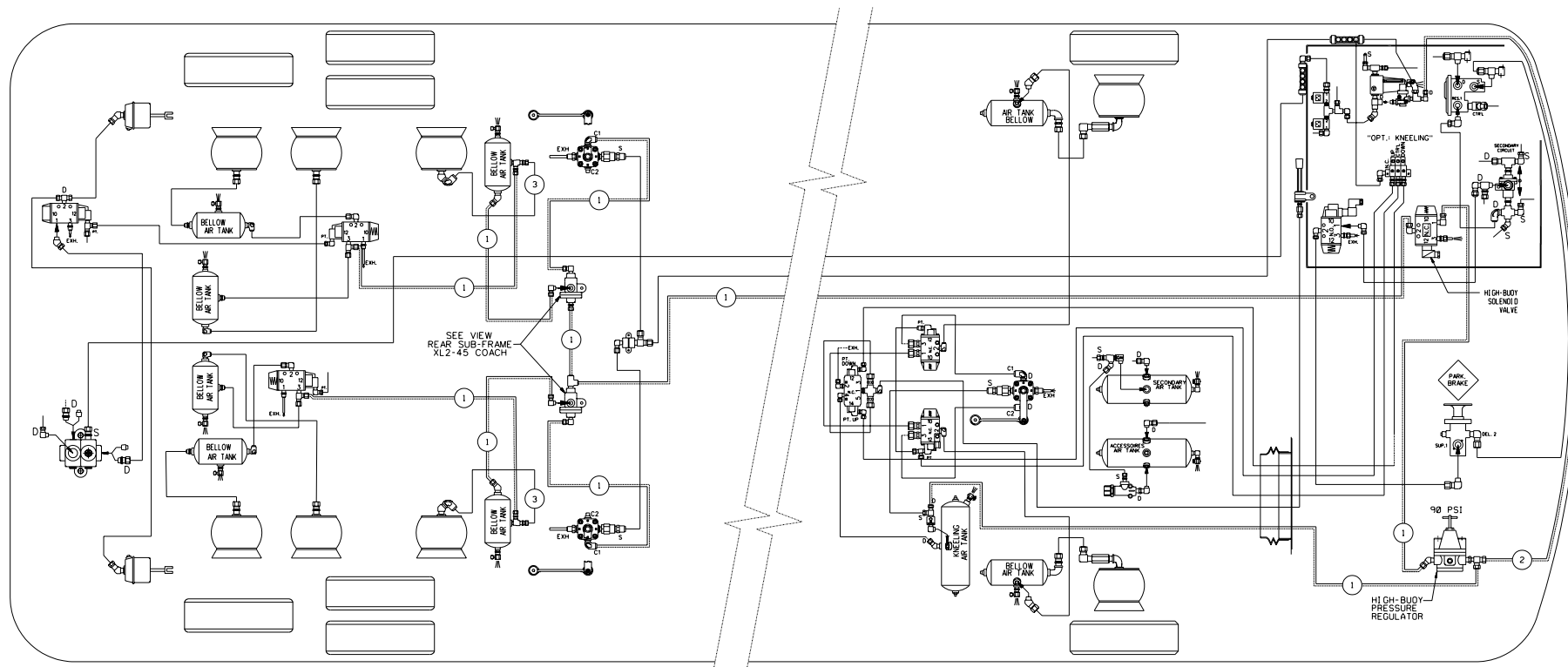
BALLOON	PIPE
*1	3/8" O.D. BLUE
*2	3/4" O.D. BLACK
*3	1/4" O.D. BLACK
	STD PIPING
	OPTIONAL PIPING

XL2-45 COACH,
ENGINE 2002
WITH I. F. S.

WITH OPTION FRONT KNEELING
& REAR LOW-BUOY COMBINATION

D140300 P2 REV. A

DATE : 2003/03



TUBE COLOR CODING	
ACTIVE COLOR	CIRCUIT
→ → → RED	SECONDARY
→ → → GREEN	PRIMARY & SUPPLY
→ → → YELLOW	PARKING BRAKE
→ → → BLUE	SUSPENSION
→ → → BLACK	ACCESSORIES

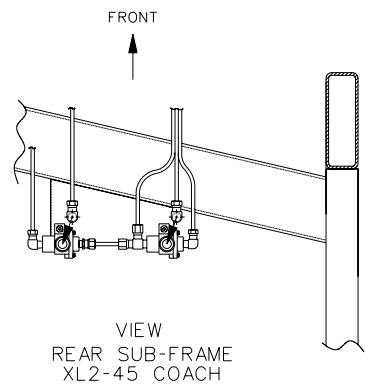
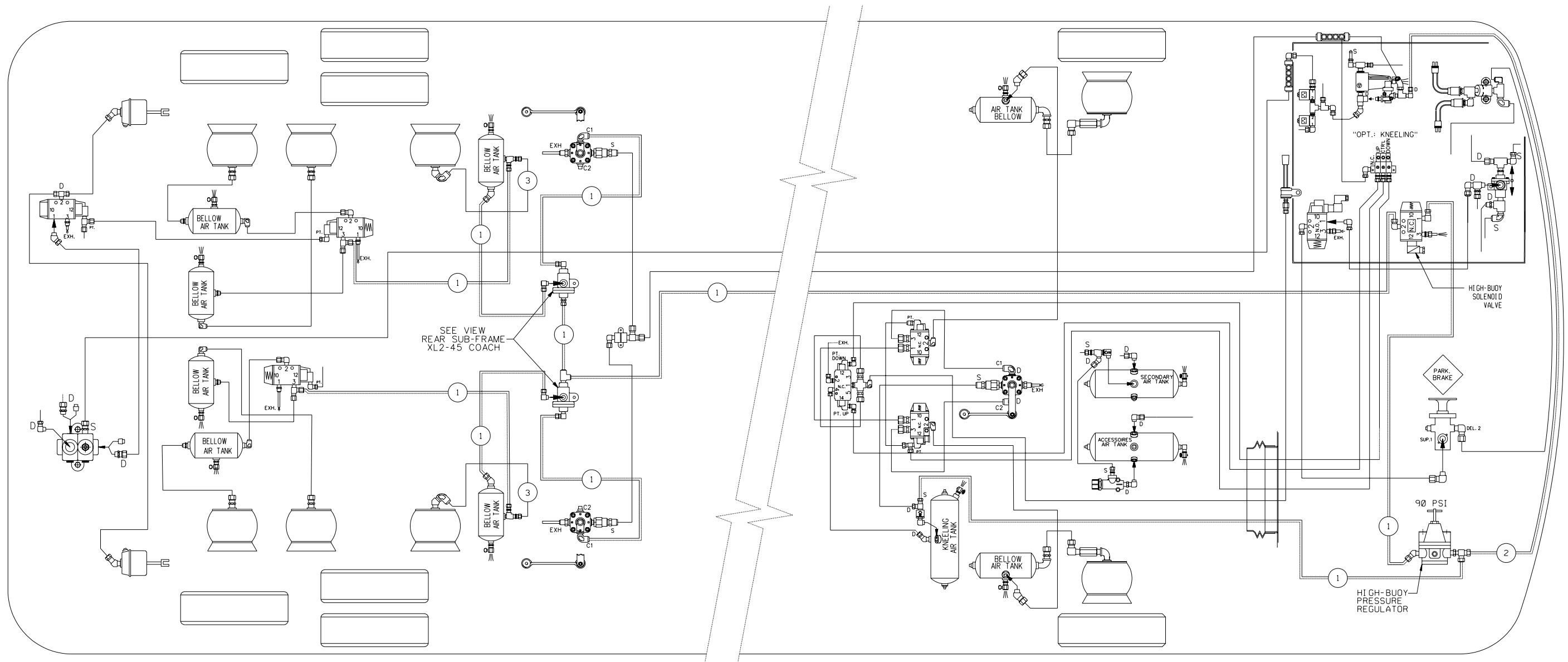
BALLOON	PIPE
• 1	3/8" O.D. BLUE
• 2	1/2" O.D. BLUE
• 3	3/4" O.D. BLACK
—	STD PIPING
—	OPTIONAL PIPING

XL2-45 COACH,
ENGINE 2002
WITH I. F. S.

WITH OPTION FRONT KNEELING
& HIGH-BUOY COMBINATION.

D140300 P3 REV. A

DATE : 2003/03



TUBE COLOR CODING		
ACTIVE	COLOR	CIRCUIT
→ → →	RED	SECONDARY
→ → →	GREEN	PRIMARY & SUPPLY
→ → →	YELLOW	PARKING BRAKE
→ → →	BLUE	SUSPENSION
→ → →	BLACK	ACCESSORIES

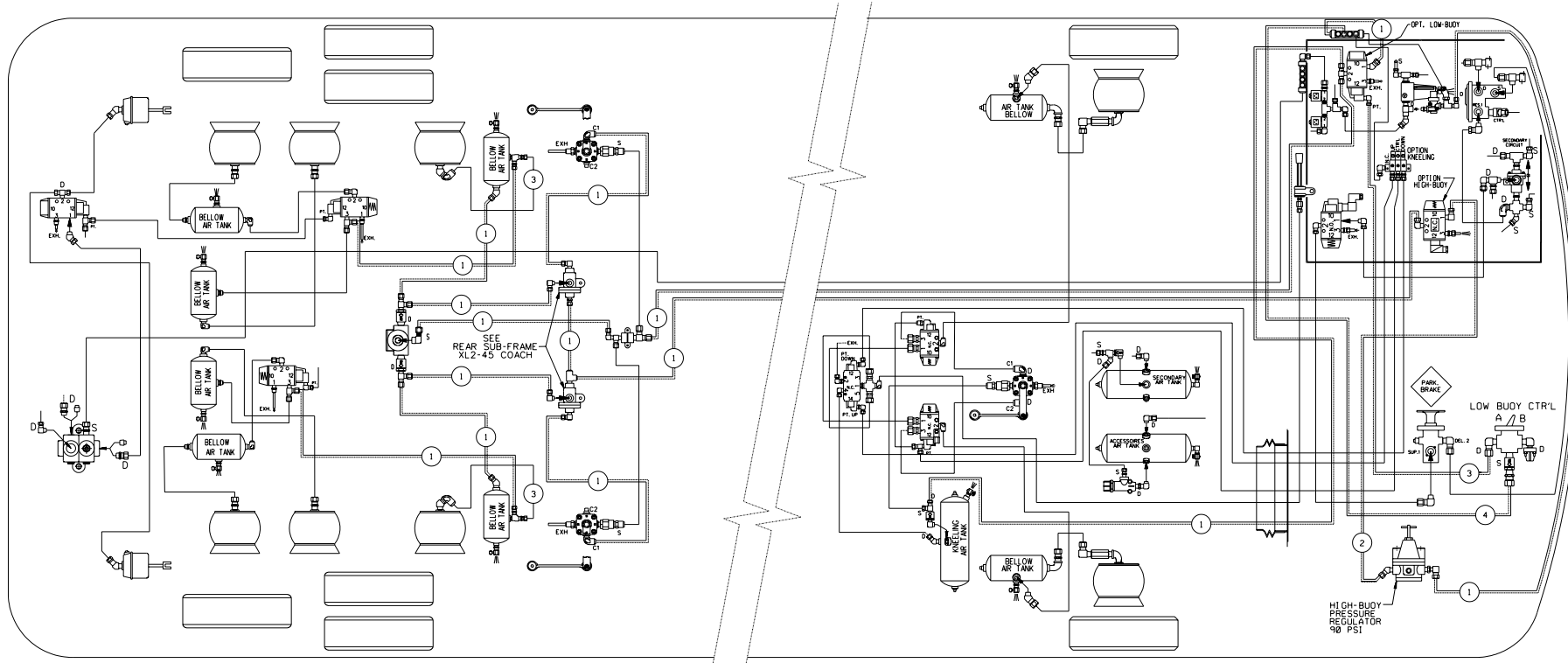
BALLOON	PIPE
# 1	3/8" O.D. BLUE
# 2	1/2" O.D. BLUE
# 3	3/4" O.D. BLACK
—	STD PIPING
==	OPTIONAL PIPING

XL2-45 COACH,
ENGINE 2002
WITH I.F.S.

WITH OPTION FRONT KNEELING
& HIGH-BUOY COMBINATION.

D140300 P3 REV.B

DATE : 2004/02

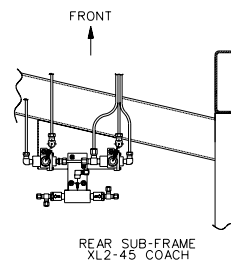


NOTE:

CONTROL VALVE OPT. "LOW-BUOY" , "A" OR "B" SETTING:

POSITION "A": VALVE IS OPEN,
AIR FLOW BETWEEN SUPPLY (S) AND
DELIVERY (D) , LOW-BUOY IS NOT IN FUNCTION.

POSITION "B": VALVE CLOSED,
AIR DOESN'T FLOW BETWEEN SUPPLY (S) AND
DELIVERY (D) , LOW-BUOY IS IN FUNCTION.



TUBE COLOR CODING	
ACTIVE COLOR	CIRCUIT
→ → RED	SECONDARY
→ → GREEN	PRIMARY & SUPPLY
→ → YELLOW	PARKING BRAKE
→ → BLUE	SUSPENSION
→ → BLACK	ACCESSORIES

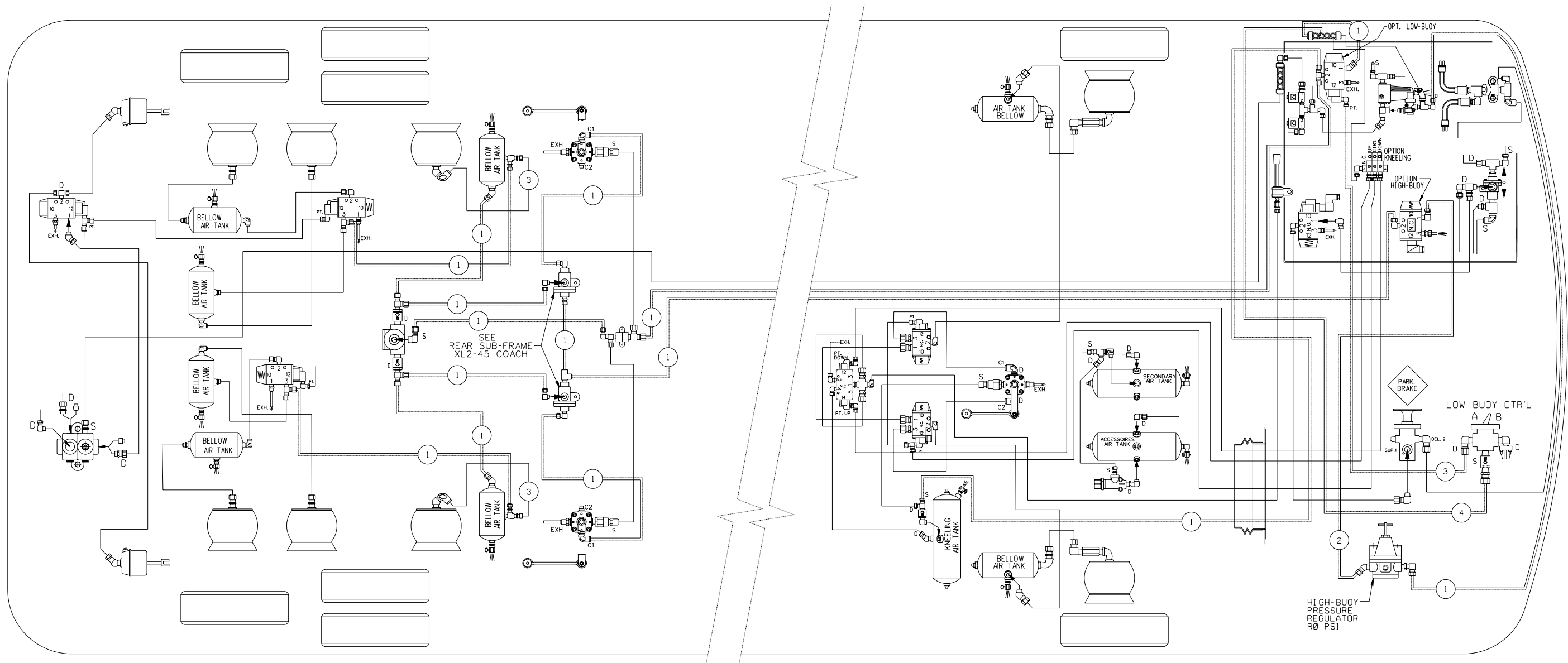
BALLOON	PIPE
*1	3/8" O.D. BLUE
*2	1/2" O.D. BLUE
*3	3/4" O.D. BLACK
*4	1/4" O.D. BLACK
———	STD PIPING
-----	OPTIONAL PIPING

XL2-45 COACH,
ENGINE 2002
WITH I. F. S.

WITH OPTION FRONT
KNEELING, LOW-BUOY &
HIGH-BUOY COMBINATION

D140300 P4 REV.A

DATE : 2003/02

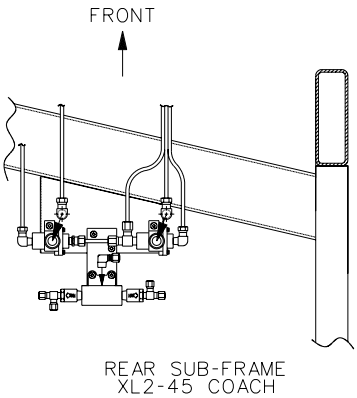


NOTE:

CONTROL VALVE OPT. "LOW-BUOY" , "A" OR "B" SETTING:

POSITION "A": VALVE IS OPEN,
AIR FLOW BETWEEN SUPPLY (S) AND
DELIVERY (D) , LOW-BUOY IS NOT IN FUNCTION.

POSITION "B": VALVE CLOSED,
AIR DOESN'T FLOW BETWEEN SUPPLY (S) AND
DELIVERY (D) , LOW-BUOY IS IN FUNCTION.



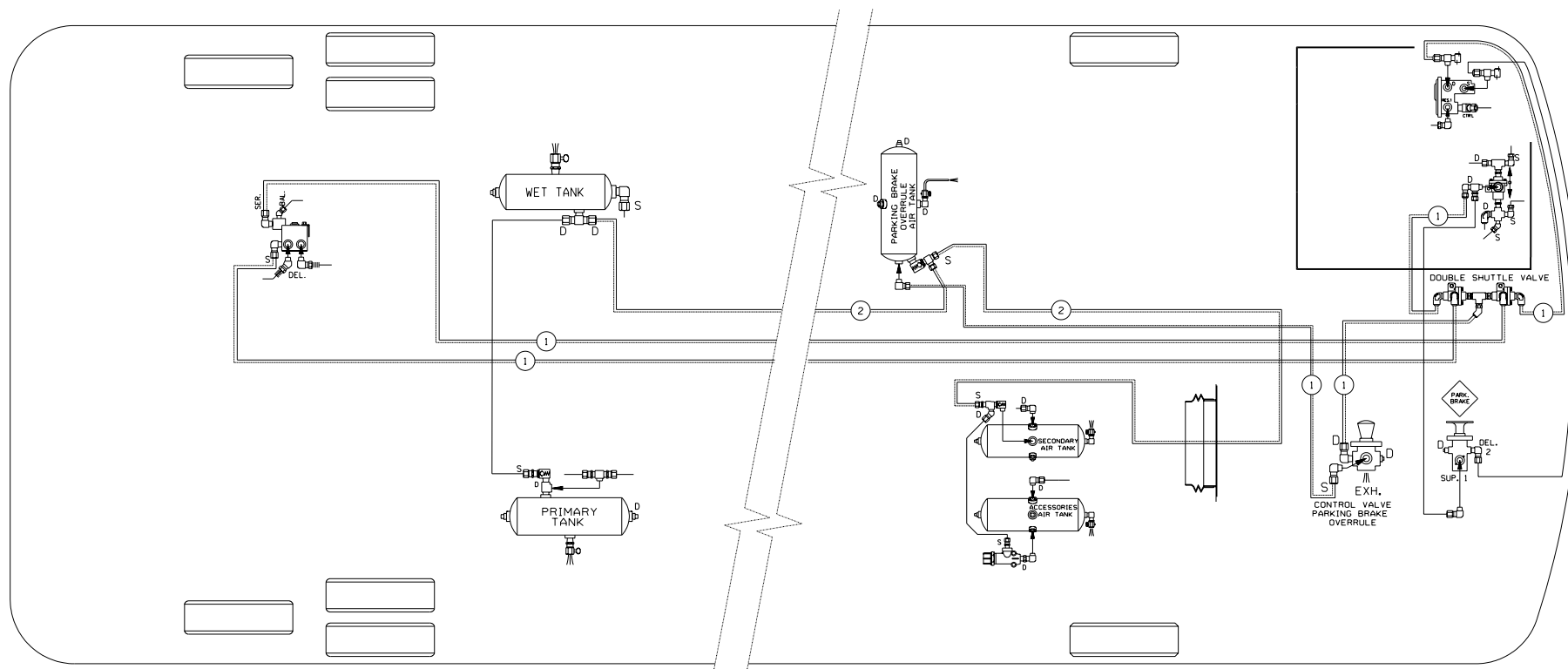
TUBE COLOR CODING		
ACTIVE	COLOR	CIRCUIT
→ → →	RED	SECONDARY
→ → →	GREEN	PRIMARY & SUPPLY
→ → →	YELLOW	PARKING BRAKE
→ → →	BLUE	SUSPENSION
→ → →	BLACK	ACCESSORIES

BALLOON	PIPE
#1	3/8" O.D. BLUE
#2	1/2" O.D. BLUE
#3	3/4" O.D. BLACK
#4	1/4" O.D. BLACK
———	STD PIPING
=====	OPTIONAL PIPING

XL2-45 COACH,
ENGINE 2002
WITH I.F. S.

WITH OPTION FRONT
KNEELING, LOW-BUOY &
HIGH-BUOY COMBINATION

D1 40300 P4 REV.B

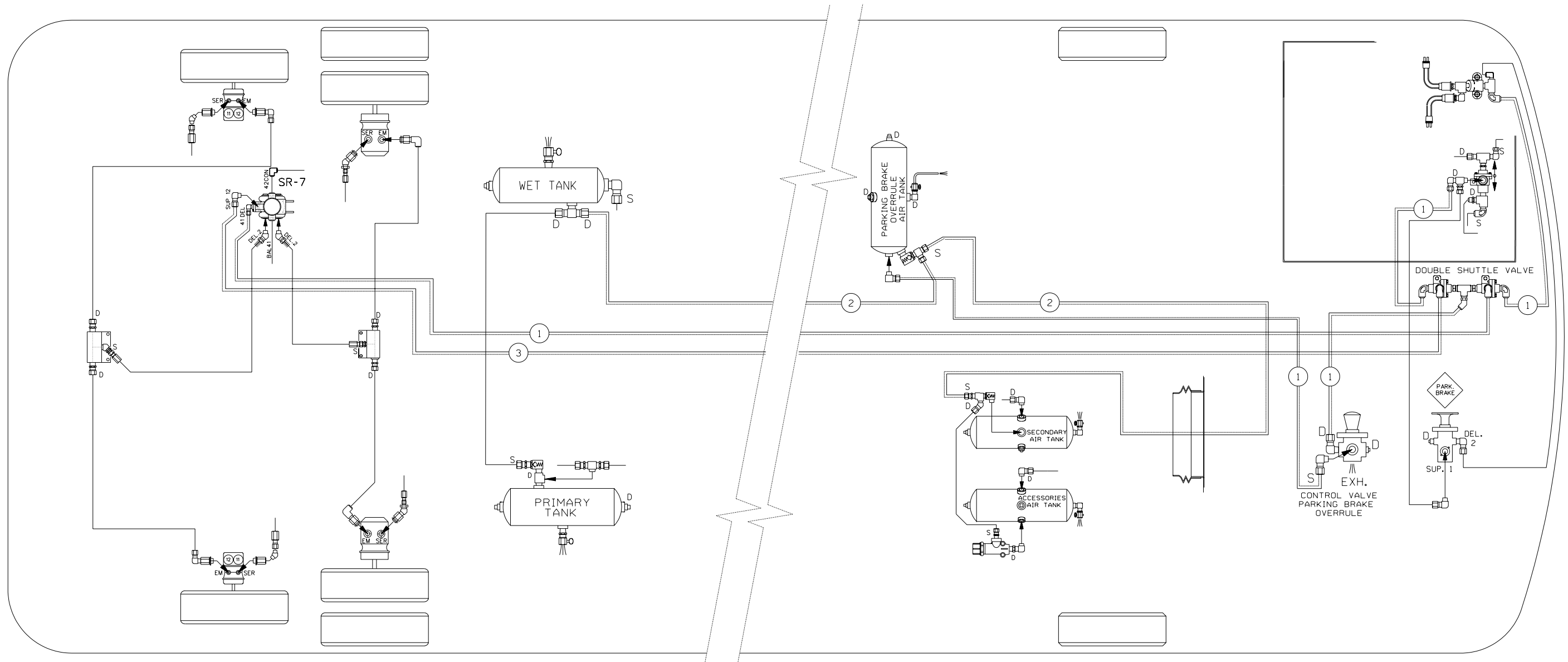


TUBE COLOR CODING		
ACTIVE	COLOR	CIRCUIT
→ →	RED	SECONDARY
→ →	GREEN	PRIMARY & SUPPLY
→ →	YELLOW	PARKING BRAKE
→ →	BLUE	SUSPENSION
→ →	BLACK	ACCESSORIES

BALLOON	PIPE
*1	3/8" O.D. YELLOW
*2	5/8" O.D. GREEN
—	STD PIPING
—	OPTIONAL PIPING

DATE : 2003/06

XL2-45 COACH,
ENGINE 2002
WITH I. F. S.
WITH OPTION
PARKING BRAKE OVERRULE
D140300 P5 REV. A



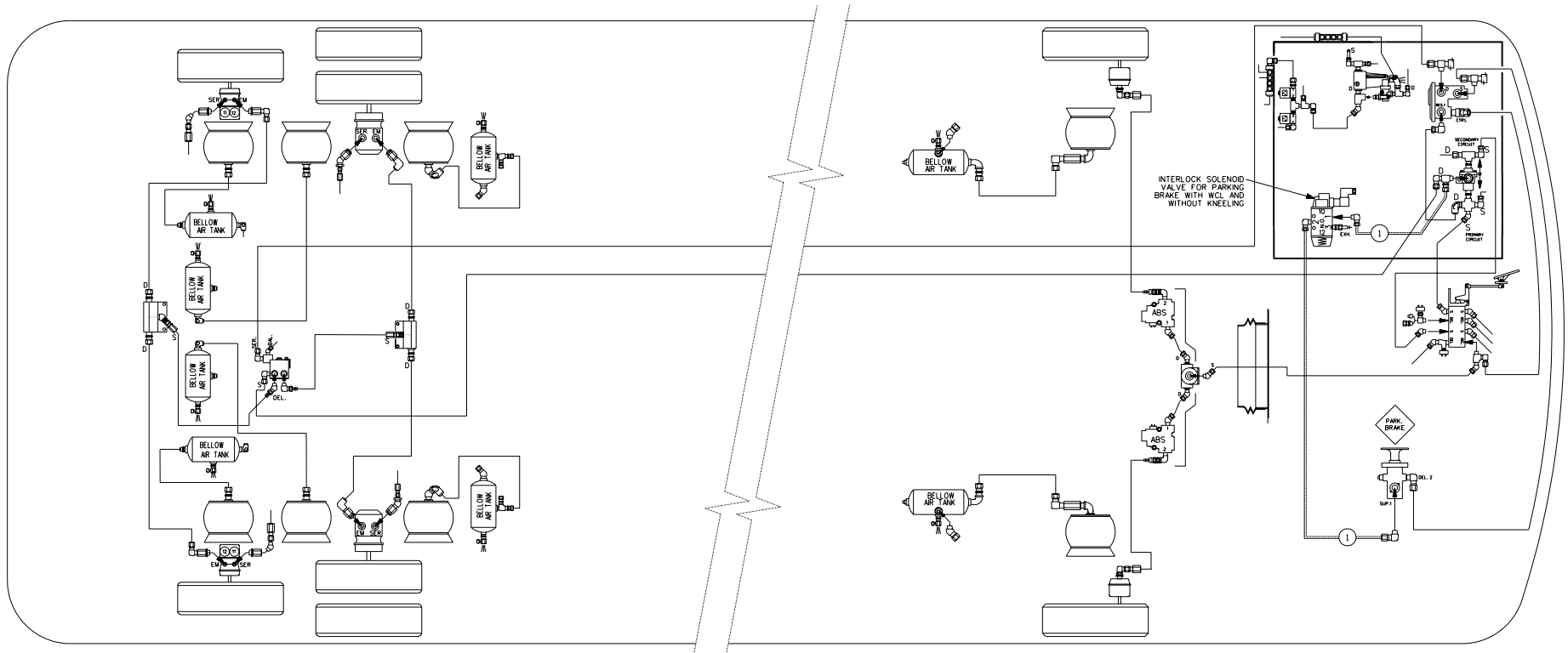
TUBE COLOR CODING		
ACTIVE	COLOR	CIRCUIT
→ → →	RED	SECONDARY
→ → →	GREEN	PRIMARY & SUPPLY
→ → →	YELLOW	PARKING BRAKE
→ → →	BLUE	SUSPENSION
→ → →	BLACK	ACCESSORIES

BALLOON	PIPE
#1	3/8" O.D. YELLOW
#2	5/8" O.D. GREEN
#3	1/2" O.D. YELLOW
— — —	STD PIPING
=====	OPTIONAL PIPING

XL2-45 COACH,
ENGINE 2002
WITH I.F.S.

WITH OPTION
PARKING BRAKE OVERRULE

D1 40300 P5 REV. B

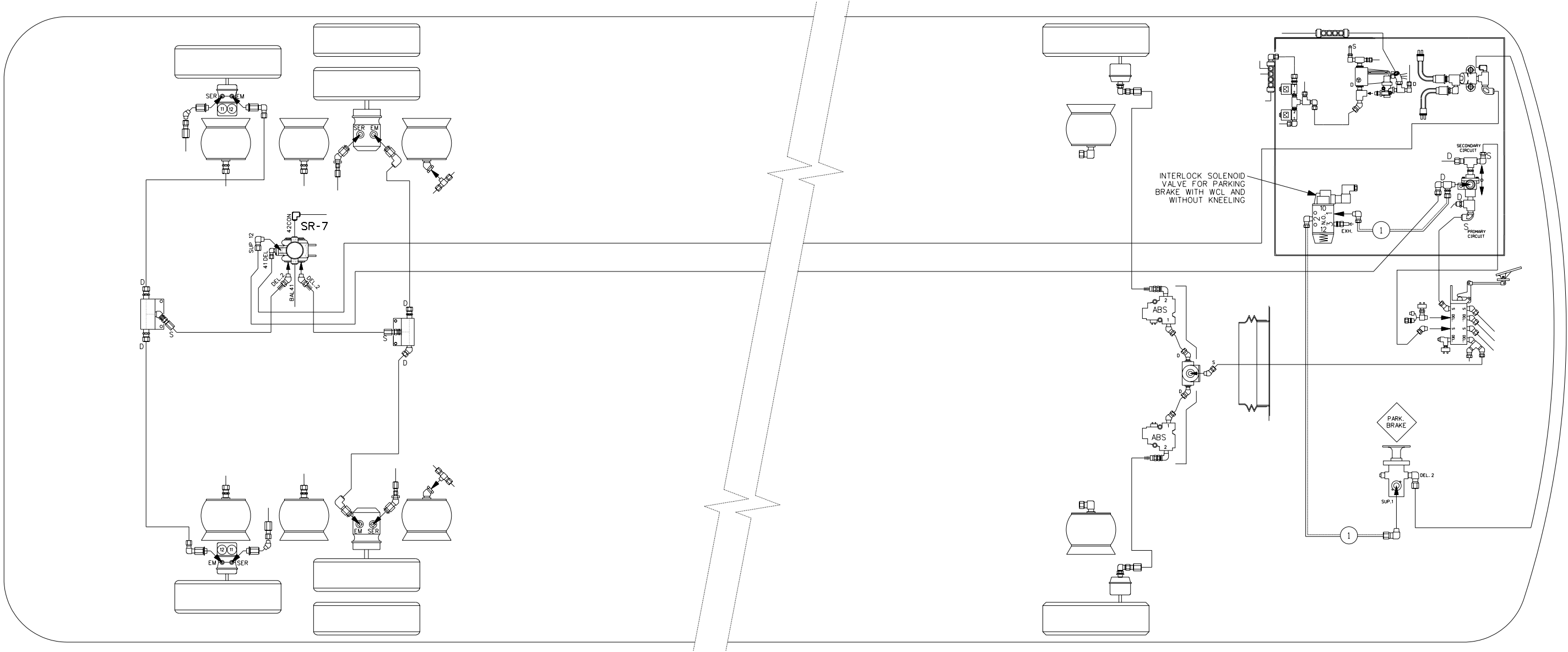


TUBE COLOR CODING		
ACTIVE	COLOR	CIRCUIT
→ →	RED	SECONDARY
→ →	GREEN	PRIMARY & SUPPLY
→ →	YELLOW	PARKING BRAKE
→ →	BLUE	SUSPENSION
→ →	BLACK	ACCESSORIES

BALLOON	PIPE
*1	3/8" O.D. YELLOW
	STD PIPING
	OPTIONAL PIPING

XL2-45 COACH,
ENGINE 2002
WITH I. F. S.
WITH OPTION PARKING BRAKE
WITH WHEELCHAIR LIFT
AND WITHOUT KNEELING
D140300 P6 REV. A

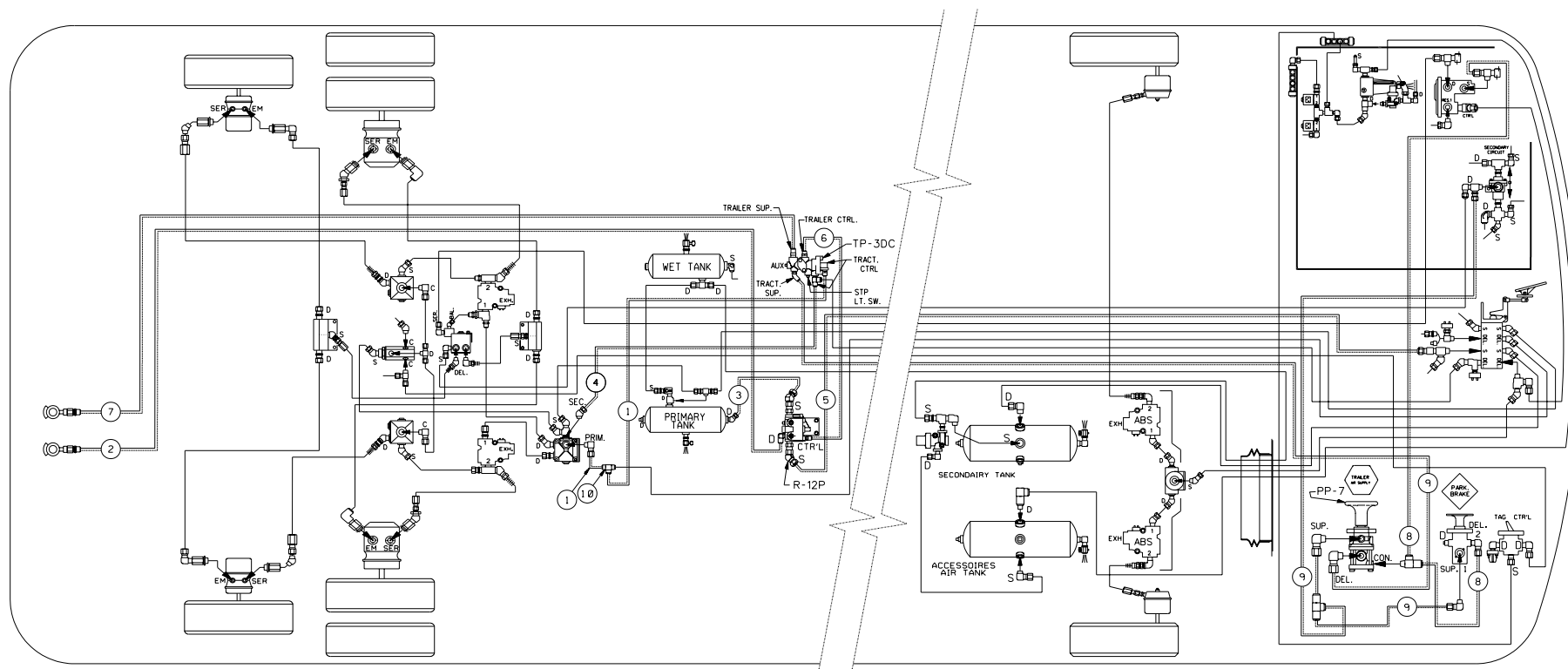
DATE : 2003/04



TUBE COLOR CODING		
ACTIVE	COLOR	CIRCUIT
→ → →	RED	SECONDARY
→ → →	GREEN	PRIMARY & SUPPLY
→ → →	YELLOW	PARKING BRAKE
→ → →	BLUE	SUSPENSION
→ → →	BLACK	ACCESSORIES

BALLOON	PIPE
#1	3/8" O.D. YELLOW
———	STD PIPING
=====	OPTIONAL PIPING

XL2-45 COACH,
ENGINE 2002
WITH FRONT BEAM AXLE
WITH OPTION PARKING BRAKE
WITH WEELCHAIR LIFT
AND WITHOUT KNEELING
D1 40301 P6 REV. B



TUBE COLOR CODING		
ACTIVE	COLOR	CIRCUIT
→ →	RED	SECONDARY
→ →	GREEN	PRIMARY & SUPPLY
→ →	YELLOW	PARKING BRAKE
→ →	BLUE	SUSPENSION
→ →	BLACK	ACCESSORIES

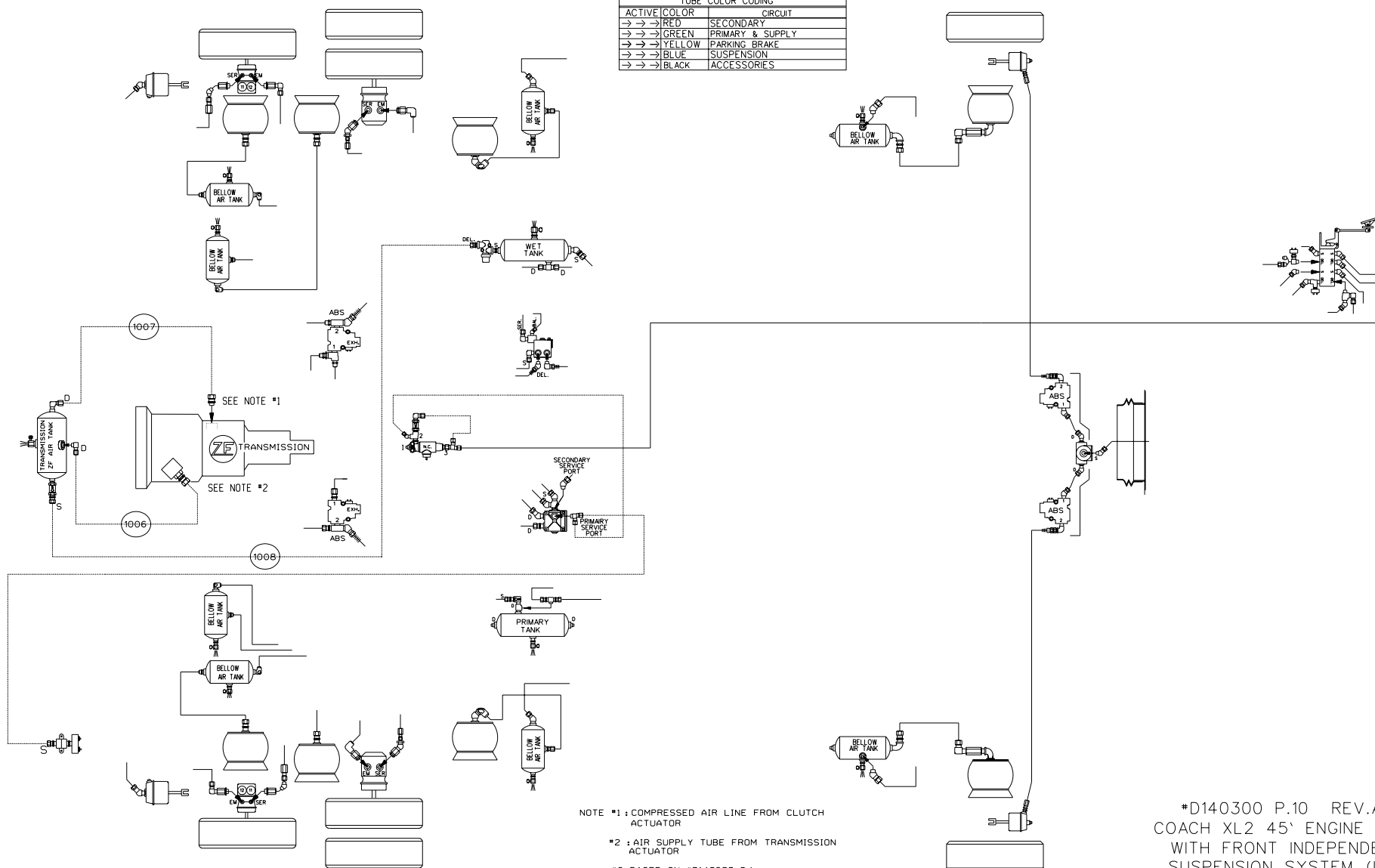
BALLOON	PIPE
*1	3/8" O.D. GREEN
*2	1/2" O.D. GREEN
*3	5/8" O.D. GREEN
*4	3/8" O.D. RED
*5	5/8" O.D. RED
*6	3/8" O.D. BROWN
*7	1/2" O.D. BROWN
*8	1/4" O.D. YELLOW
*9	3/8" O.D. YELLOW
*10	3/8" UNION TEE
	STD PIPING
	OPTIONAL PIPING

DATE : 2003/02

XL2-45 COACH,
ENGINE 2002
WITH I. F. S.

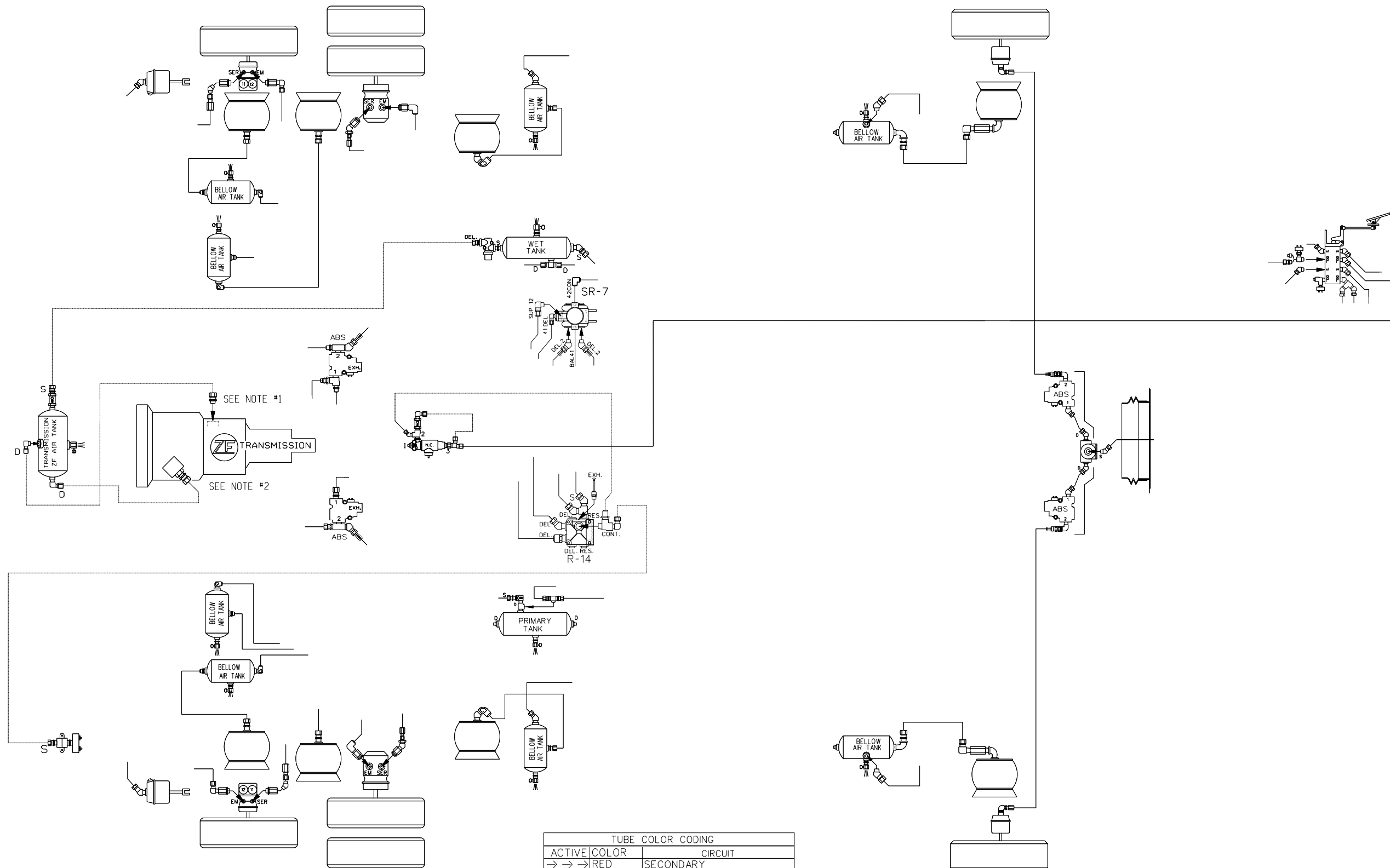
WITH OPTION
TRAILER HITCH
D140300 P9 REV. A

TUBE COLOR CODING		
ACTIVE	COLOR	CIRCUIT
→ →	RED	SECONDARY
→ →	GREEN	PRIMARY & SUPPLY
→ →	YELLOW	PARKING BRAKE
→ →	BLUE	SUSPENSION
→ →	BLACK	ACCESSORIES



DATE: 2002-11

#D140300 P.10 REV.A
COACH XL2 45' ENGINE 2002
WITH FRONT INDEPENDENT
SUSPENSION SYSTEM (ISS)
OPTION TRANSMISSION ZF



NOTE #1: COMPRESSED AIR LINE FOR CLUTCH ACTUATOR

#2: COMPRESSED AIR LINE FOR TRANSMISSION ACTUATOR

#3: BASED ON #D140300 P.1

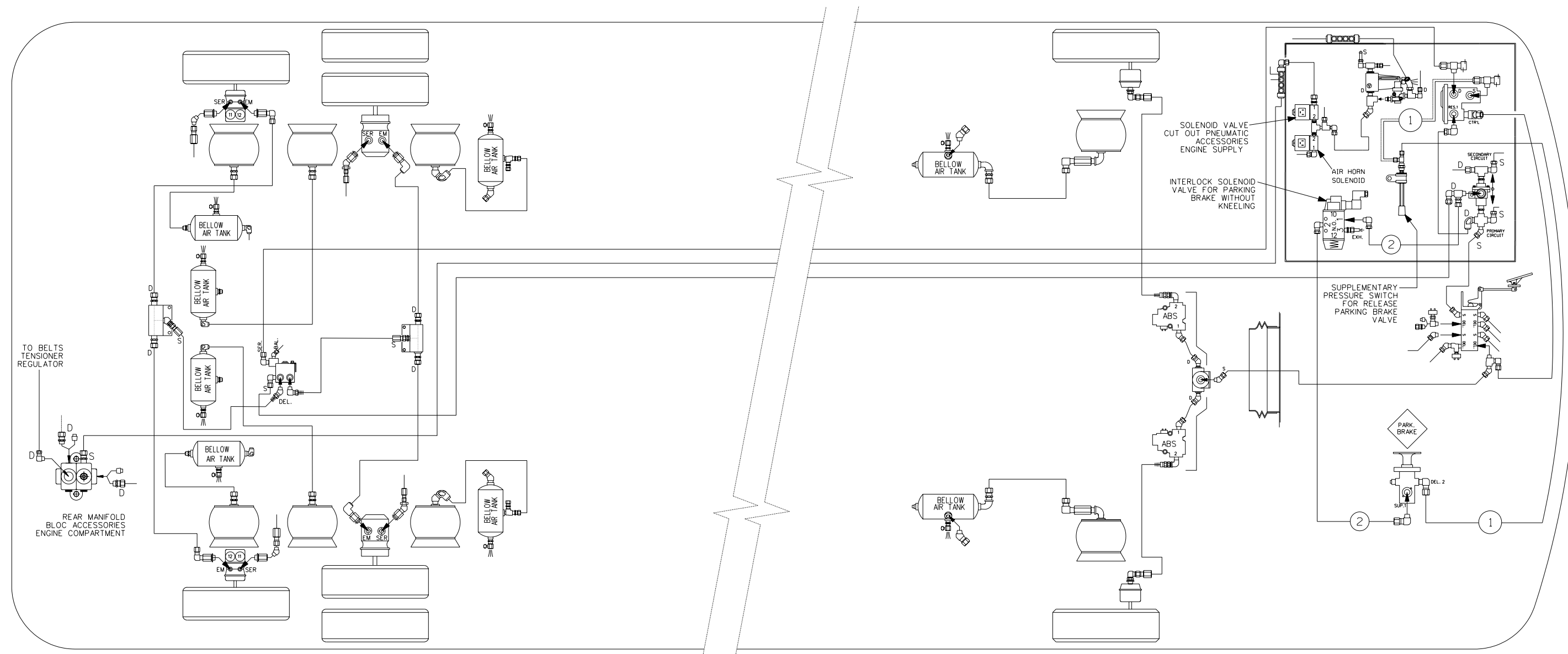
TUBE COLOR CODING		
ACTIVE	COLOR	CIRCUIT
→ → →	RED	SECONDARY
→ → →	GREEN	PRIMARY & SUPPLY
→ → →	YELLOW	PARKING BRAKE
→ → →	BLUE	SUSPENSION
→ → →	BLACK	ACCESSORIES

XL2-45 COACH,
ENGINE 2002
WITH I. F. S.

WITH OPTION
TRANSMISSION ZF

D1 40300 P10 REV. C

DATE : 2004/02



TUBE COLOR CODING		
ACTIVE	COLOR	CIRCUIT
→ → →	RED	SECONDARY
→ → →	GREEN	PRIMARY & SUPPLY
→ → →	YELLOW	PARKING BRAKE
→ → →	BLUE	SUSPENSION
→ → →	BLACK	ACCESSORIES

BALLOON	PIPE
#1	1/4" O.D. YELLOW
#2	3/8" O.D. YELLOW
———	STD PIPING
=====	OPTIONAL PIPING

XL2-45 COACH, ORLEANS
ENGINE 2002
WITH I.F.S.

WITH OPTION PARKING BRAKE
RELEASE WITH
SUPPLEMENTARY SWITCH
D1 40300 P.11 REV. A

